


25 The King Shall Come

CONSOLATION


CM

Fm Cm Fm B \flat Cm Fm Cm



1 The King shall come when morn - ing dawns And
 2 Not as of old a lit - tle child To
 3 Oh, bright - er than the ris - ing morn When
 4 Oh, bright - er than that glo - rious morn Shall
 5 The King shall come when morn - ing dawns And

Fm Cm Fm B \flat C Fm Cm D \flat

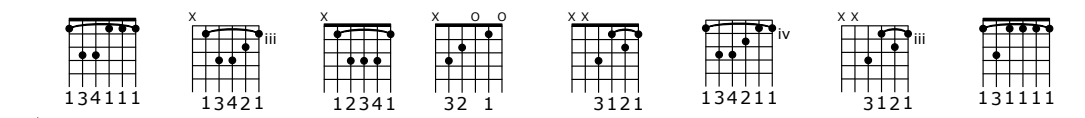


light tri - um - phant breaks, When beau - ty gilds
 bear and fight and die, But crowned with glo -
 Christ, vic - to - rious, rose And left the lone -
 dawn up - on our race The day when Christ
 light and beau - ty brings. Hail, Christ the Lord!


A \flat E \flat Fm⁷ Cm Fm Fm Cm Fm E \flat Fm



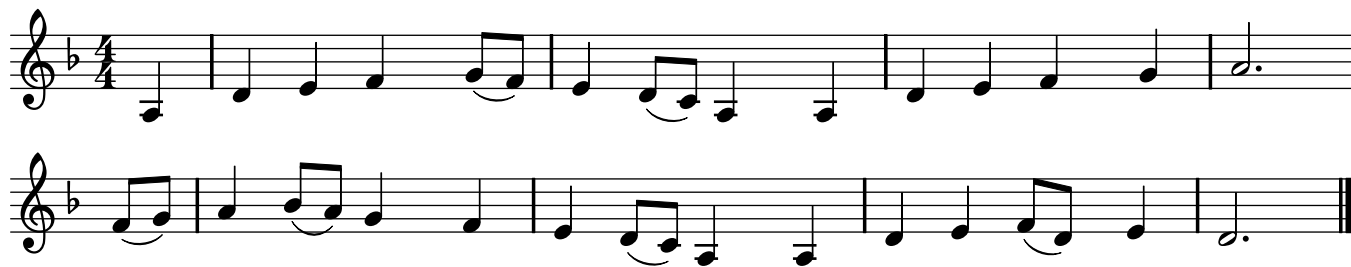
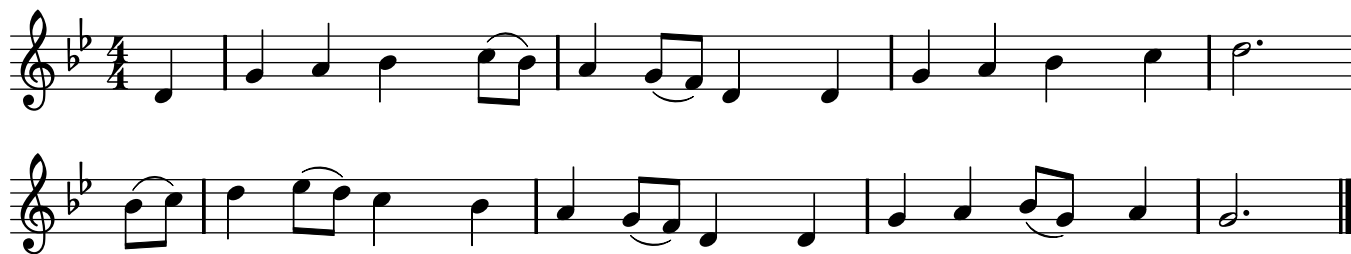
the east - ern hills And life to joy a - wakes—
 ry like the sun That lights the morn - ing sky.
 some place of death De - spite the rage of foes.
 in splen - dor comes And we shall see his face.
 Your peo - ple pray; Come quick - ly, King of kings!



134111 x 13421 x 12341 x 32 1 x 3121 134211 iv 3121 x x 131111



8vb-----
 Fm Cm B \flat C D \flat A \flat E \flat Fm⁷

CONSOLATION (F)Transposed for E \flat Instruments**CONSOLATION (B \flat)**Transposed for B \flat Instruments

Hymn #25: The King Shall Come
Text: John Brownlie, 1859-1925
Public Domain

Christian Worship: A Lutheran Hymnal
Tune: John Wyeth,
Repository of Sacred Music,
Harrisburg, 1813
Public Domain